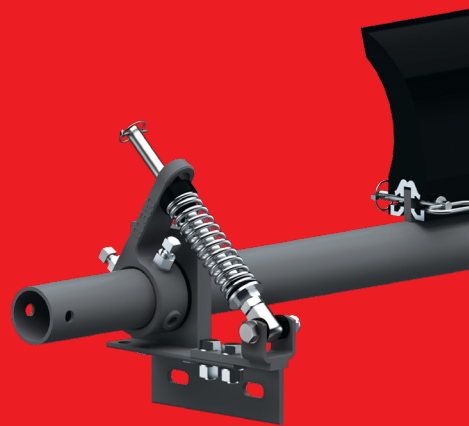


Belt Maintenance Equipment - Belt Cleaners



# mato

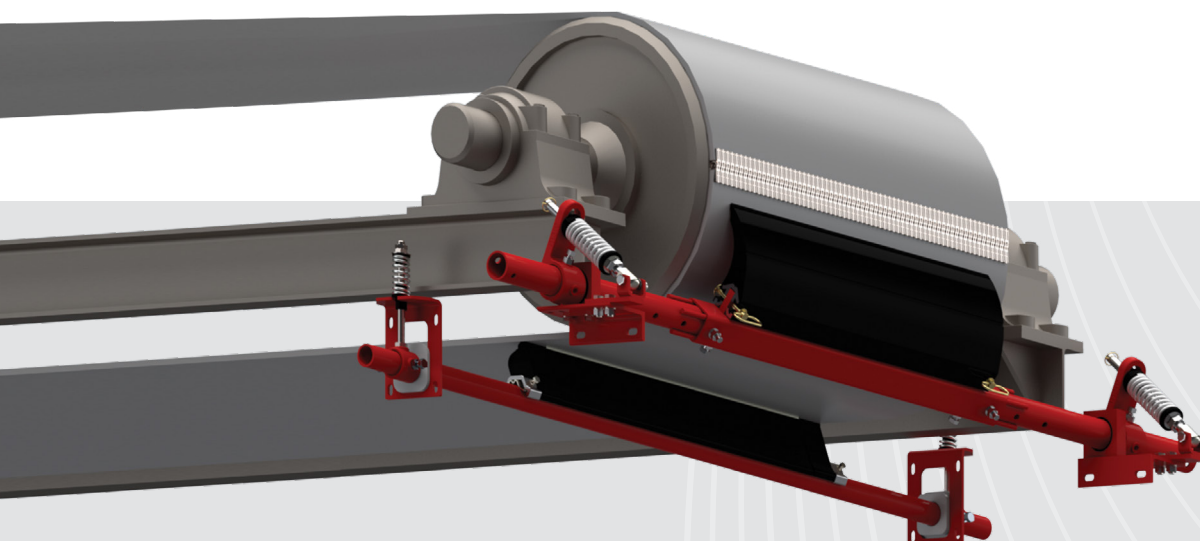
Product Overview

## INTRODUCTION

# Belt Maintenance Equipment - Belt Cleaners

Installation of primary and secondary belt cleaners enhances the performance of any conveyor system.

- ✓ Reducing the amount of carry back material
- ✓ Reducing material spillage to minimize clean up work
- ✓ Reducing the potential hazard of belt mis-tracking
- ✓ Increase conveyor belt life
- ✓ Increase production time due to excessive spillage
- ✓ Protection against wearing components on the conveyor line



## Type of Belt Cleaners

### Primary Belt Cleaners

- ▶ Tungsten Carbide for vulcanised conveyor systems
- ▶ Polyurethane for conveyor systems with mechanical fasteners
- ▶ Mounted on the head pulley of the conveyor system below the centre line out of the material flow for protection
- ▶ Removes the bulk of material flow from the conveyor

### Secondary Belt Cleaners

- ▶ Tungsten Carbide for vulcanised conveyor systems
- ▶ Specialised Tungsten Carbide for conveyor systems with mechanical fasteners
- ▶ Mounted directly behind where the conveyor belt leaves the head pulley
- ▶ Removes the sticky fine or wet material for when Primary Cleaners cannot be installed on the head pulley
- ▶ Multiple secondary cleaners to be fitted on extreme applications

PRODUCT OVERVIEW

## Primary Cleaners



**MDP - MATO Drop-on  
Primary Cleaner**



**MTP - MATO T-Slot  
Primary Cleaner**



**MCP1 - Tungsten  
Carbide Cleaner**

## Secondary Cleaners



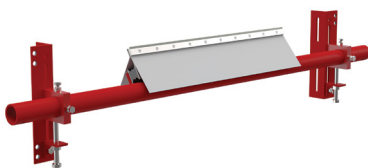
**MUS2 - Tungsten Carbide**



**MUS3 - Tungsten Carbide**



**MUS3 - Polyurethane**



**MCS2 - Tungsten Carbide**



**MCS3 - Tungsten Carbide**



**MCS4 - Tungsten Carbide**



**MCS5 - Tungsten Carbide**

## PRIMARY BELT CLEANERS

# MDP - MATO Drop-on Primary Cleaner

- ✓ 1 piece full width Polyurethane (PU) blade option
- ✓ Quick and easy installation

The MDP - MATO Drop-on Primary Cleaner is the simplest primary cleaner available on the market, with its easy tension spring application for constant tensioning and reduced adjustability.

Quick and easy blade replacement by removing the blade locking pin is simple. The MDP range of Polyurethane Primary Cleaners are manufactured with a unique self-lubricating blade to reduce friction and blade wear.



Above image shown with CS1 End Assembly.



MATO have an optional plate style end assembly (CS2) available for special applications, please contact your MATO representative to discuss additional details as these are available upon request.

## MDP Technical Specifications

**Tension Methods:** CS - Compression Spring.



	MDP120	MDP185	MDP235	MDP235HD	MDP306HD
Blade Material	PU	PU	PU	PU	PU
Blade Height	120mm	185mm	235mm	235mm	306mm
Belt Speed	up to 3.5m/s	up to 3.5m/s	up to 5.0m/s	up to 5.0m/s	up to 7.5m/s
Head Pulley Diameters	250mm - 500mm	250mm - 900mm	400mm - 1000mm	400mm - 1000mm	500mm - 2100mm
Mechanical Fasteners	Yes	Yes	Yes	Yes	Yes
Reversing Belts	Yes	Yes	Yes	Yes	Yes

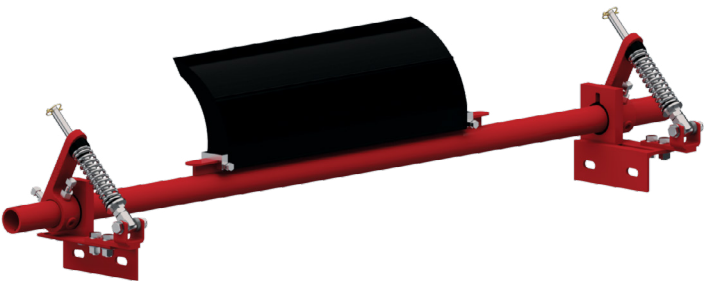
PRIMARY BELT CLEANERS

MTP - MATO T-Slot Primary Cleaner

✔ Individual 150mm Polyurethane (PU) blade option

The MTP replacement blades are supplied in 150mm lengths and have an easy slide on slide off application.

The MTP P2 PU blade has MATO's unique self lubricated additive to prevent friction and blade wear.



MTP Technical Specifications

Tension Methods: CS - Compression Spring.



	MTP185	MTP235
Blade Material	PU	PU
Blade Height	185mm	235mm
Belt Speed	up to 3.5m/s	up to 5.0m/s
Head Pulley Diameters	250mm - 900mm	400mm - 1000mm
Mechanical Fasteners	Yes	Yes
Reversing Belts	Yes	Yes

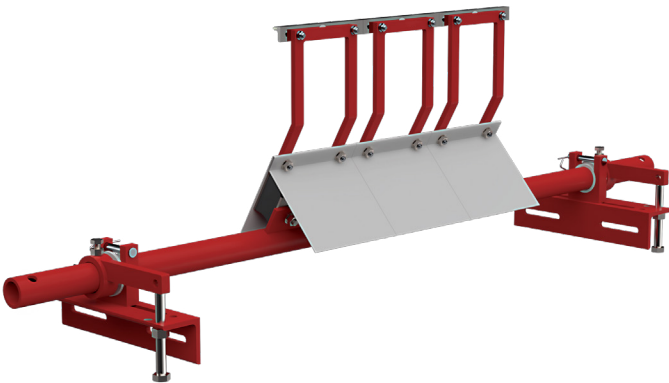
PRIMARY BELT CLEANERS

MCP1 - Tungsten Carbide Cleaner

✔ Individual Tungsten Carbide (TC) Blade

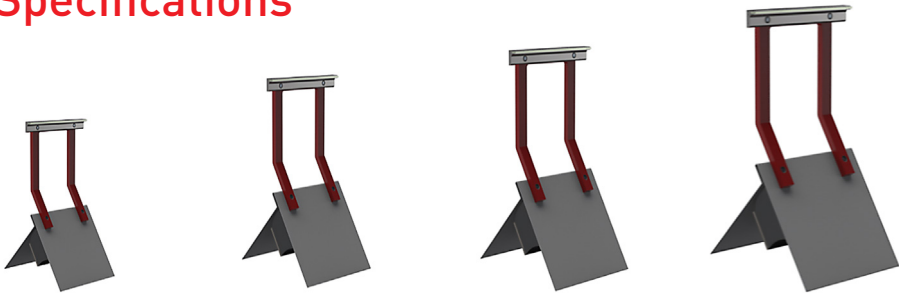
MAT0 standard MCP1 blade/ cushion arrangement.

2 blade options are available and 4 different arm sizes to suit multiple pulley diameters



MCP1 Technical Specifications

Tension Methods: Bolt Tensioning



	MCP1-SS	MCP1-S	MCP1-M	MCP1-L
Blade Material	TC	TC	TC	TC
Blade Widths	200mm	200mm	200mm	200mm
Blade Height	120mm	185mm	235mm	306mm
Belt Speed	up to 5.0m/s	up to 5.0m/s	up to 5.0m/s	up to 5.0m/s
Head Pulley Diameters	250mm - 500mm	500mm - 800mm	800mm - 1000mm	1000 - 1500mm
Mechanical Fasteners	No	No	No	No
Reversing Belts	Yes	Yes	Yes	Yes

## SECONDARY BELT CLEANERS

# MUS2 - Tungsten Carbide

- ✓ **M-Trak segmented Blade Cleaners**
- ✓ **Slide on and off system for quick and easy installation**

The MUS2 secondary cleaner is unique within itself to have a parallelogram designed into the cushion allowing constant blade angle attacking to the material flow, this allows for automatic adjustability within the cleaner for when the belt thickness can vary.

The MUS2 is well suited for conveyor belts with mechanical fasteners when the (TI) tungsten impact blade is applied.

For Vulcanised belt MATO recommend the (TL) tungsten long-life blade.



# MUS3 - Tungsten Carbide

- ✓ **M-Trak segmented Blade Cleaners**
- ✓ **Slide on and off system for quick and easy installation**

The MUS3 cleaner is designed to fit in small and restricted conveyor areas where limited space is available. With its low profile it is an excellent option for a tungsten carbide secondary belt cleaner.

The MUS3 is also designed for reversing conveyor belts such as feeder belts or belts which have roll back.

Suitable for conveyors with mechanical belt fasteners.



## SECONDARY BELT CLEANERS

# MUS3 - Polyurethane

- ✓ M-Trak segmented Blade Cleaners
- ✓ Slide on and off system for quick and easy installation

The MUS3 Polyurethane cleaner is a versatile cleaner, can be used as a water wiper or an alternative cleaner within any full system to enhance removal of any remaining material.



## MU Technical Specifications

**Tension Methods:** CS - Compression Spring or AB - Air Bag Tension.

Cushion for the MUS2 and MUS3 are available in 45 and 65 duro hardness for optimum belts speeds.

The MUS3 PU blade has a hardness of 93a.



	MUS2	MUS3	MUS3
Blade Material	TC - Tungsten Carbide	TC - Tungsten Carbide	PU - Polyurethane
Blade Increments	150mm	150mm	150mm
Belt Speed	up to 5.0m/s	up to 5.0m/s	up to 3.5m/s
For Reversing Belts	No	Yes	Yes
Mechanical Fasteners	Yes	Yes	Yes



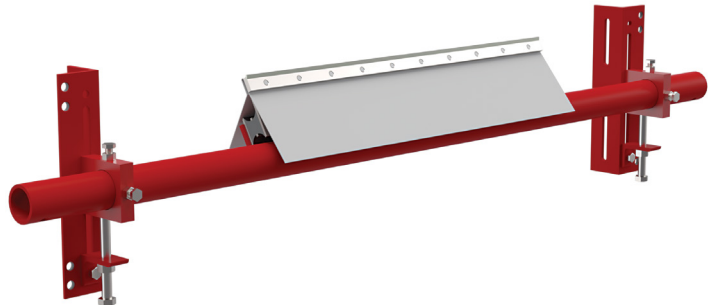
## SECONDARY BELT CLEANERS

### MCS2 - Tungsten Carbide

The MCS2 secondary cleaner is an excellent option to reduce the amount of carry back returned down the conveyor line.

The MCS2 allows for individual blade movement as each blade/cushion is individually mounted. Can be used as a stand alone cleaner, or for improved performance add in a pre cleaner on the head pulley.

The MCS2 is suitable for vulcanised belts only. There are 2 blade options available (TI) Tungsten Impact blade for harsh conditions, or the (TL) Tungsten Long-life blade where belt conditions are ideal.



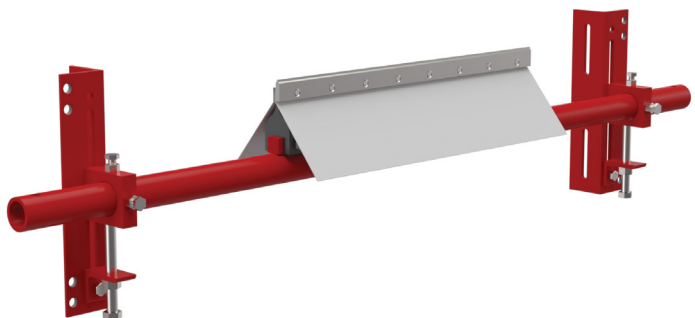
### MCS3 - Tungsten Carbide

The MCS3 secondary cleaner is an excellent option to reduce the amount of carry back returned down the conveyor line.

The MCS3 allows for individual blade movement as each blade/cushion is individually mounted. Can be used as a stand alone cleaner, or for improved performance add in a pre cleaner on the head pulley.

The MCS3 cleaner is suitable for conveyor belts with mechanical fasteners. In addition the MCS3 is used for reversing / feeder conveyors.

2 blade options are available (TI) Tungsten Impact blade for mechanical fasteners or (TL) Tungsten Long-life blade where belt conditions are ideal.



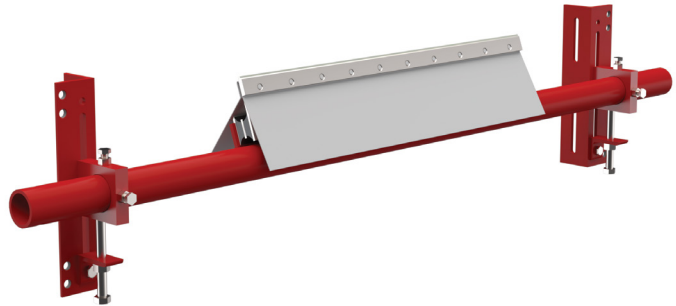
## SECONDARY BELT CLEANERS

### MCS4 - Tungsten Carbide

The MCS4 secondary cleaner is an excellent option to reduce the amount of carry back returned down the conveyor line.

The MCS4 allows for individual blade movement as each blade/cushion is individually mounted. Can be used as a stand alone cleaner, or for improved performance add in a pre cleaner on the head pulley.

The MCS4 is suitable for conveyors with mechanical fasteners.

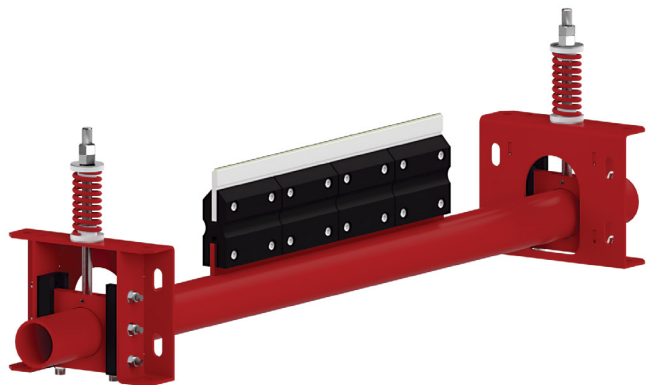


### MCS5 - Tungsten Carbide

Heavy Duty MCS5 secondary cleaner is an excellent option to reduce the amount of carry back returned down the conveyor line. The MCS5 arrangement has a special hardened steel heat treated blade to withstand abrasion, impact and durability.

The MCS5 allows for individual blade movement as each blade/cushion is individually mounted. Can be used as a stand alone cleaner or for improved performance add in a pre cleaner on the head pulley.

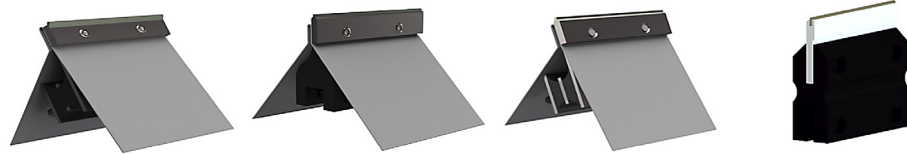
The MCS5 is suitable for conveyors with mechanical fasteners.



## SECONDARY BELT CLEANERS

### MCS Technical Specifications

The MC range of bolt-on secondary cleaners for customers who currently use equivalent products.



	MCS2	MCS3	MCS4	MCS5
<b>Blade Material</b>	TC - Tungsten Carbide	TC - Tungsten Carbide	TC - Tungsten Carbide	TC - Tungsten Carbide
<b>Blade Increments</b>	150mm	150mm	150mm	150mm
<b>Belt Speed</b>	up to 5.0m/s	up to 5.0m/s	up to 5.0m/s	up to 5.0m/s
<b>For Reversing Belts</b>	No	Yes	No	Yes
<b>Mechanical Fasteners</b>	No	Yes	Yes	Yes

## Enquire about the Belt Cleaner range

✉ [maus@mato.com.au](mailto:maus@mato.com.au)

🌐 [www.mato.com.au](http://www.mato.com.au)

## Global expertise in Belt Maintenance Equipment

# mato



MATO GmbH & Co KG  
Benzstr. 16-24  
63165 Mühlheim a.M.  
Germany  
T: +49 (0) 6108 906 0  
F: +49 (0) 6108 906 120  
www.mato.de  
beltlacing@mato.de



MATO Industries Ltd.  
Unit 1 Philips Road  
Whitebirk Ind. Estate  
Blackburn, Lancashire  
BB1 5PG United Kingdom  
T: +44 (0) 1254 387638  
F: +44 (0) 1254 238023  
info@mato.co.uk



MATO Corporation  
201 Resource Drive  
Beckley, WV 25801  
West Virginia USA  
T: +1 304 255 1280  
F: +1 304 255 2501  
info@mato-usa.com



MATO Kasachstan  
Erzhanov Street 18  
100009 Karaganda  
Republic Kasachstan  
T: +7 (0) 7 212 910 063  
F: +7 (0) 7 212 910 063  
office@mato.kz



MATO France S.A.R.L.  
Zone Artisanale du Grunhof  
2 Rue du Grunhof  
57890 Porcellette, France  
T: +33 (0) 3 87821215  
F: +33 (0) 3 87297213  
mato.france@mato.de



MATO Iberica, S.L.U.  
Pol. Industrial Mora Garay  
Calle Marie Curie, parc. 36/38  
E-33211 Gijón, Spain  
T: +34 (0) 985 328900 / 328211  
F: +34 (0) 985 322647  
matoiberica@matoiberica.es



MATO Suisse AG  
Industriestrasse 53  
CH-6034 Inwil  
Switzerland  
T: +41 (0) 41 4490990  
F: +41 (0) 41 4490992  
info@mato.ch www.mato.ch



MATO Uglemechanisatija  
Str. Krymskogo 27A  
03142 Kiev  
Ukraine  
T: +38 (0) 504759258  
ygm1@mail.ru



MATO Australia Pty Ltd.  
39 Bonville Avenue  
Thornton, NSW 2322  
Australia  
T: +61 1300 850 795  
F: +61 2 4936 1388  
maus@mato.com.au



MATO Industrial Technologies  
(Qufu) Co., Ltd.  
West End of Changchun Road,  
Development Zone of Qufu City  
273100 Qufu City, Shandong  
China, PRC  
T: +86 537 4533799  
F: +86 537 4533299  
info@mato.com.cn



MATO Sales Rep. Latin America  
Cra.41a N°22 Sur 87  
Envigado,  
Colombia  
T: +57 317 3620751  
csouto@mato-latam.com



MATO Products Pty Ltd.  
P.O. Box 224  
Kempton Park 1620  
28 Forge Road Spartan  
South Africa  
T: +27 (0) 11 928 4163  
F: +27 (0) 11 923 6071  
matosales@multotec.co.za



MATO Sib  
Uliza Telefonnaja 15  
Kemerovo  
652523 Leninsk-Kusnezkiy  
Russian Federation  
T: +7 (0) 38456 35166  
F: +7 (0) 38456 35166  
mato-sib@yandex.ru



ISO 9001

